

## PE anti-human CD56 (NCAM) Recombinant Antibody

Catalog# / Size	B-0019-41- 25Tests
	B-0019-42-100tests
Clone	KEL-CD56-001 建议 B-A19
Regulatory Status	RUO
Other Names	Leu-19, NKH1
Isotype	Mouse IgG1, $\kappa$
Description	CD56 is a single transmembrane glycoprotein also known as NCAM (Neural Cell Adhesion Molecule), Leu-19, or NKH1. It is a member of the Ig superfamily. The 140 kD isoform is expressed on NK cells and NK-T cells. CD56 is also expressed in the brain (cerebellum and cortex) and at neuromuscular junctions. Certain large granular lymphocyte (LGL) leukemias, small-cell lung carcinomas, neuronal derived tumors, myelomas, and myeloid leukemias also express CD56. CD56 plays a role in homophilic and heterophilic adhesion via binding to itself or heparin sulfate.

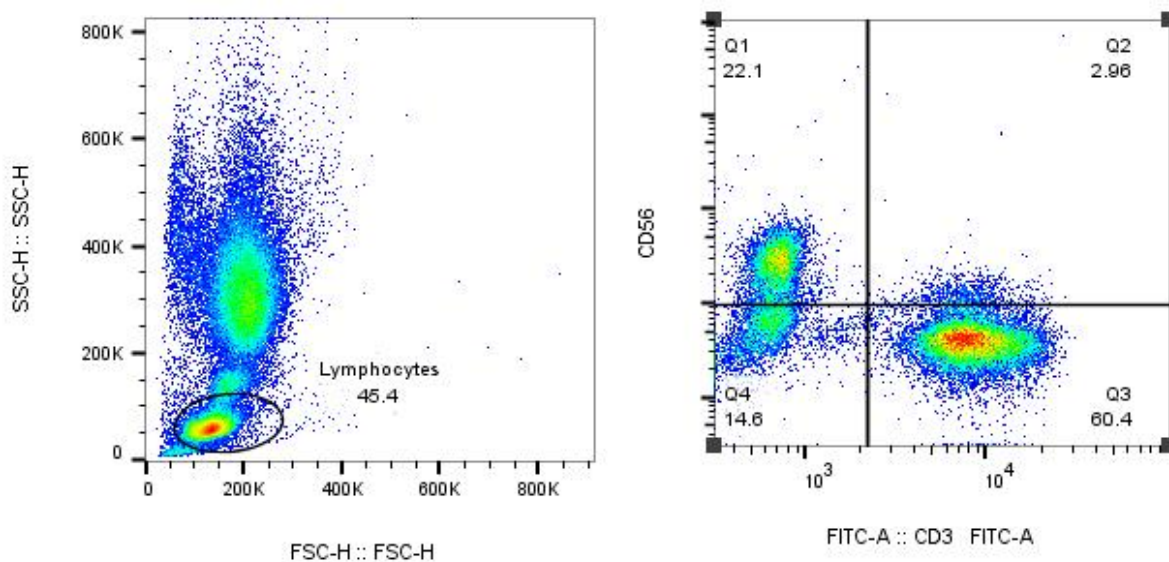
### Product Details:

Verified Reactivity	Human
Antibody Type	Recombinant
Host Species	Mouse
Formulation	Phosphate-buffered solution, pH 7.2, containing 0.09% sodium azide and BSA (origin USA)
Preparation	The antibody was purified by affinity chromatography and conjugated with PE under optimal conditions.
Storage & Handling	The antibody solution should be stored undiluted between 2°C and 8°C, and protected from prolonged exposure to light. <b>Do not freeze.</b>
Application	<a href="#">FC -</a>
Recommended Usage	Each lot of this antibody is quality control tested by <a href="#">immunofluorescent staining with flow cytometric analysis</a> . For flow cytometric staining, the suggested use of this reagent is 5 $\mu$ l per million cells in 100 $\mu$ l staining volume or 5 $\mu$ l per 100 $\mu$ l of whole blood.
Excitation Laser	Blue Laser (488 nm) Green Laser (532 nm)/Yellow-Green Laser (561 nm)

## Antigen Details:

<b>Structure</b>	Ig superfamily, single transmembrane or GPI-anchored glycoprotein
<b>Distribution</b>	NK cells, NK-Tcells, brain and neuromuscular junctions, certain large granular lymphocyte (LGL) leukemias, small-cell lung carcinomas, neuronal derived tumors, myelomas, and myeloid leukemias
<b>Function</b>	Adhesion
<b>Ligand/Receptor</b>	Heparin sulfate
<b>Cell Type</b>	Leukemia, Neurons, NK cells, NKT cells
<b>Biology Area</b>	Cell Adhesion, Cell Biology, Costimulatory Molecules, Immunology
<b>Molecular Family</b>	Adhesion Molecules, CD Molecules
<b>Gene ID</b>	<a href="#">4684</a>

## Product Data:



Human peripheral blood lymphocytes are stained